

Thermal Tiger 840

Next Generation uncooled LWIR 800x600/30Hz Thermal Module

inT800 – ThermalTiger

High Resolution Thermal Module (800x600/50-60Hz)

- **800x600 VOx FPA**
- 17um pixel pitch
- 2x and 4x digital zoom
- 50/60Hz realtime output
- Intelligent Image Enhancement
- Adaptive brightness & contrast adjustment
- Adaptive Noise Reduction
- Histogram AGC algorithm
- Advanced passive cooling design
- Wide ambient temp range



inT800 – ThermalTiger

High Resolution Thermal Module (800x600/50-60Hz)

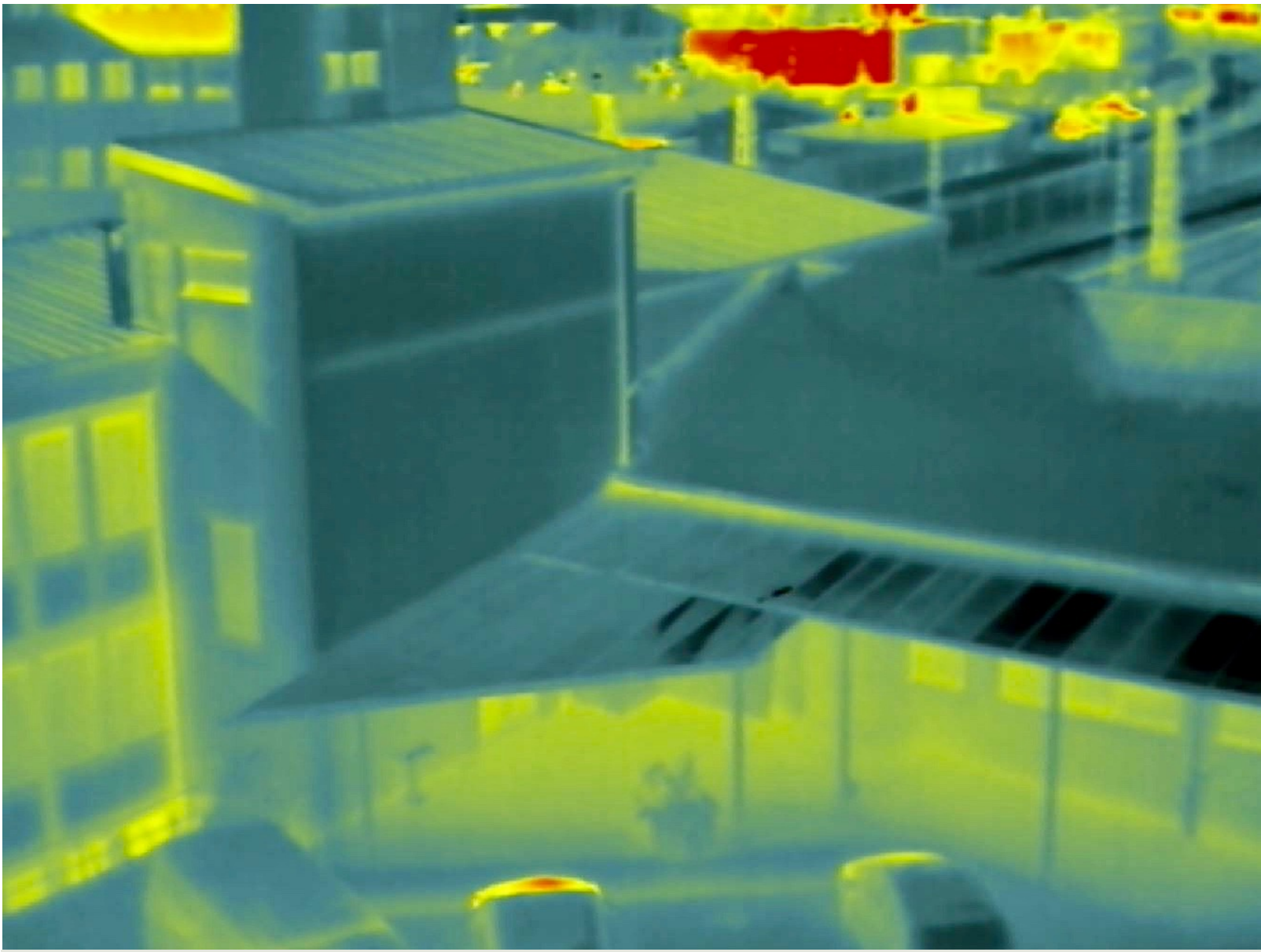
The ThermalTiger inT800 High Resolution Thermal Camera Module is the optimal choice to build high end thermal camera systems.

Using the latest detector and imaging processing design the inT800 delivers superior thermal images in any light condition day and night – even in harsh conditions like snow and fog. ThermalTiger inT800 delivers more image details than standard thermal cores.

inT800 can be easily upgraded with several optional I/O boards and wide selection of thermal lenses - Including **thermal zoom lens**.



inT800 – 800x600 Sample Image



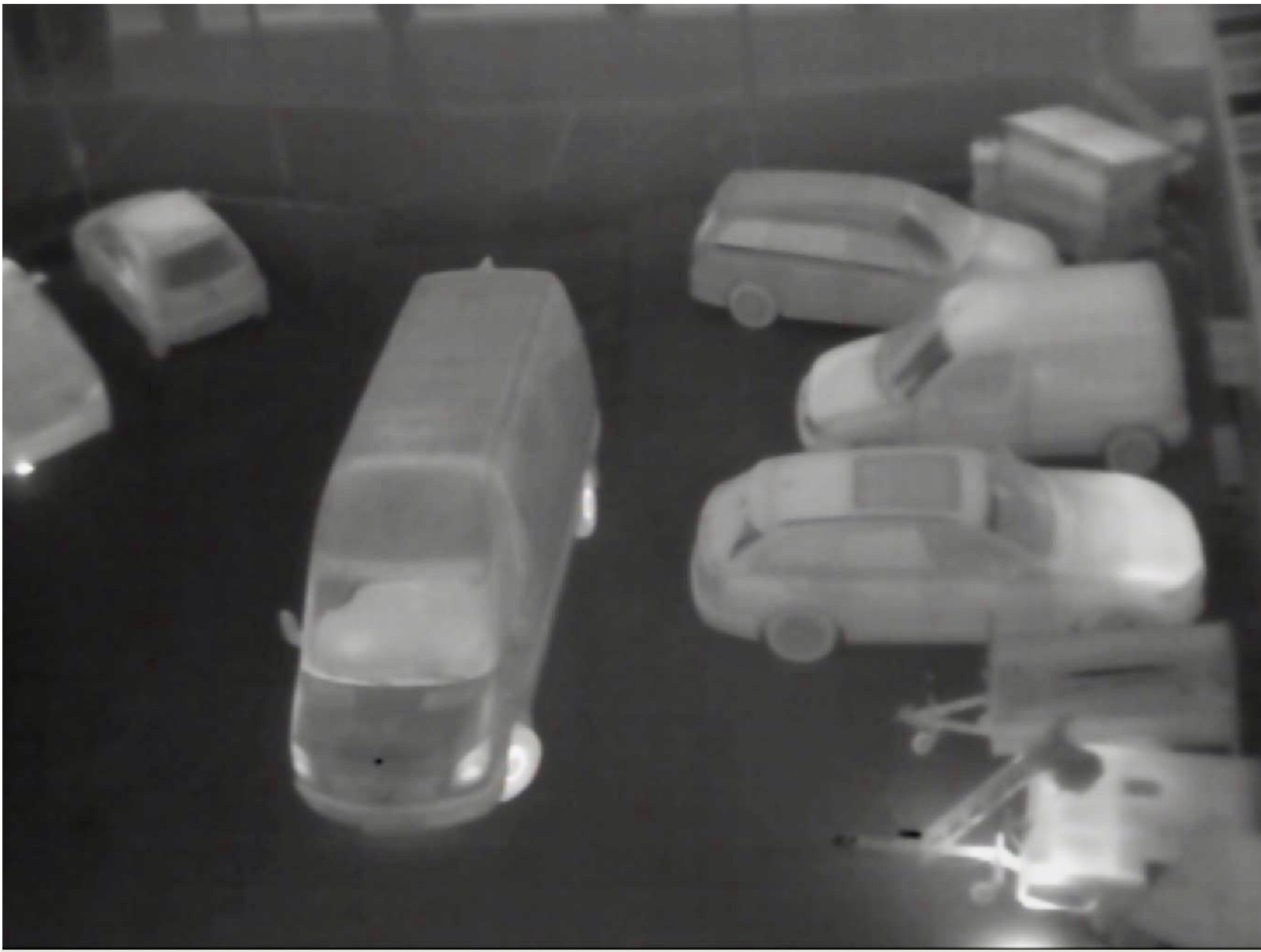
inT800 – 800x600 Sample Image



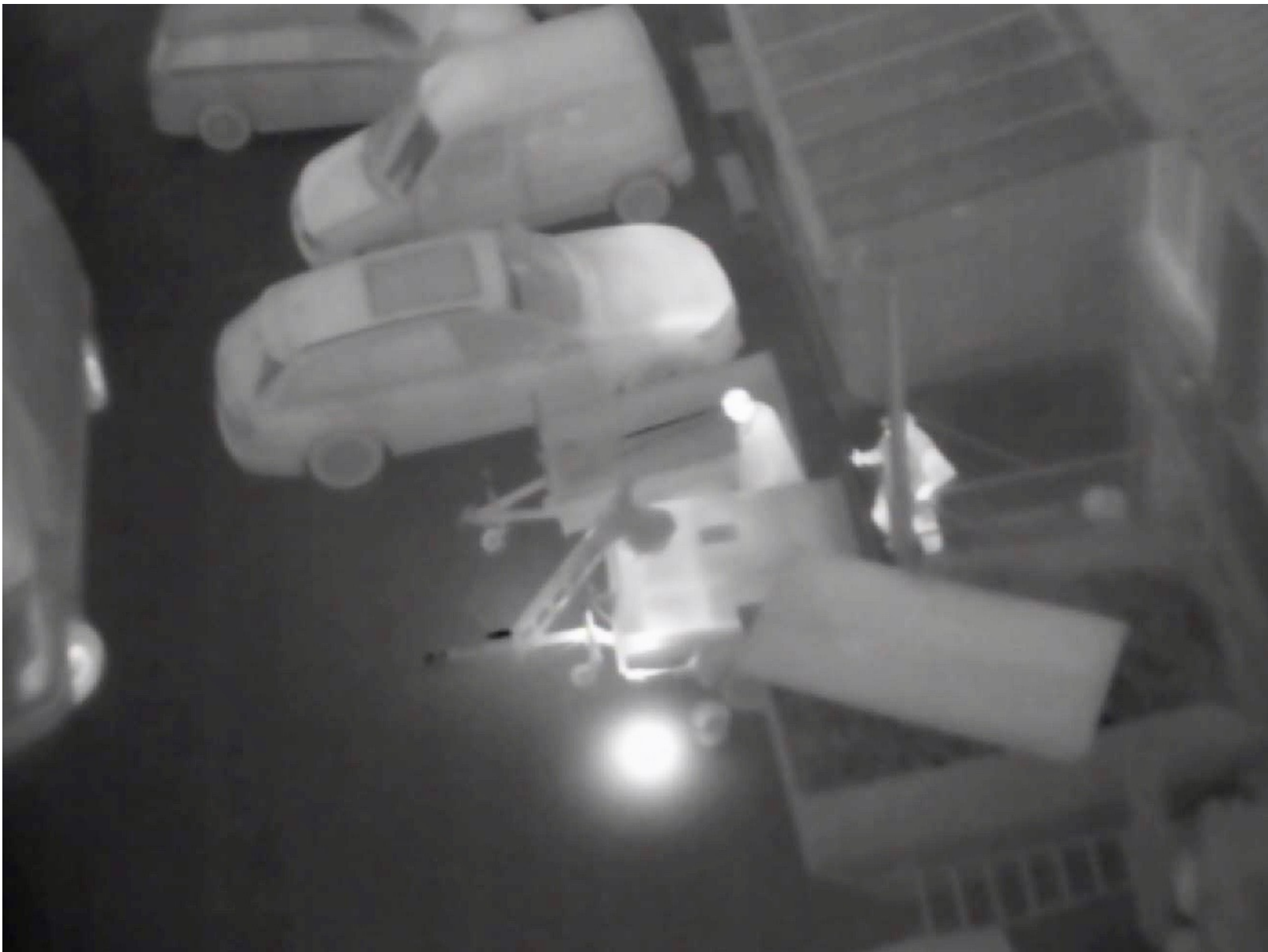
inT800 – 800x600 Sample Image



inT800 – 800x600 Sample Image



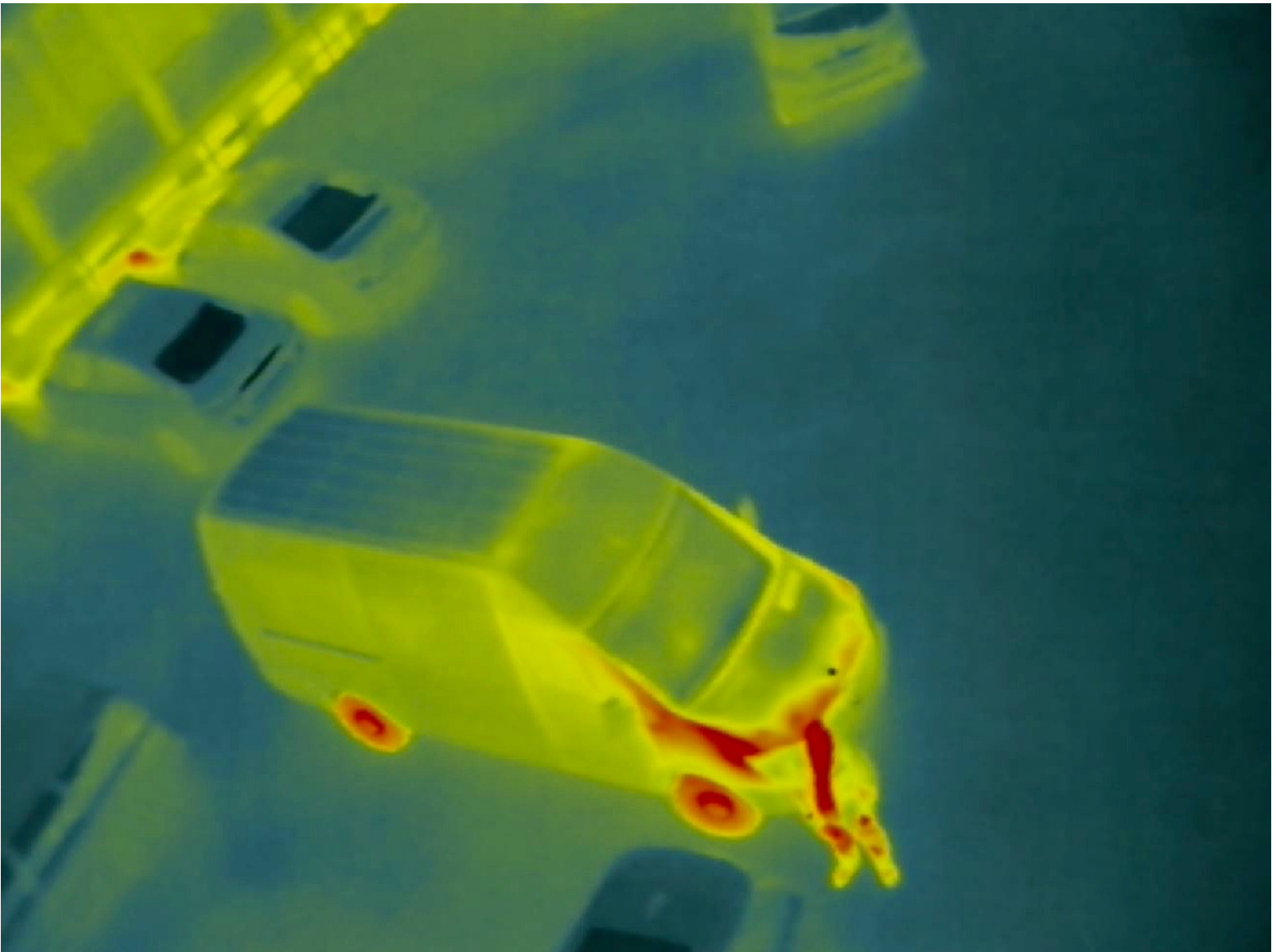
inT800 – 800x600 Sample Image



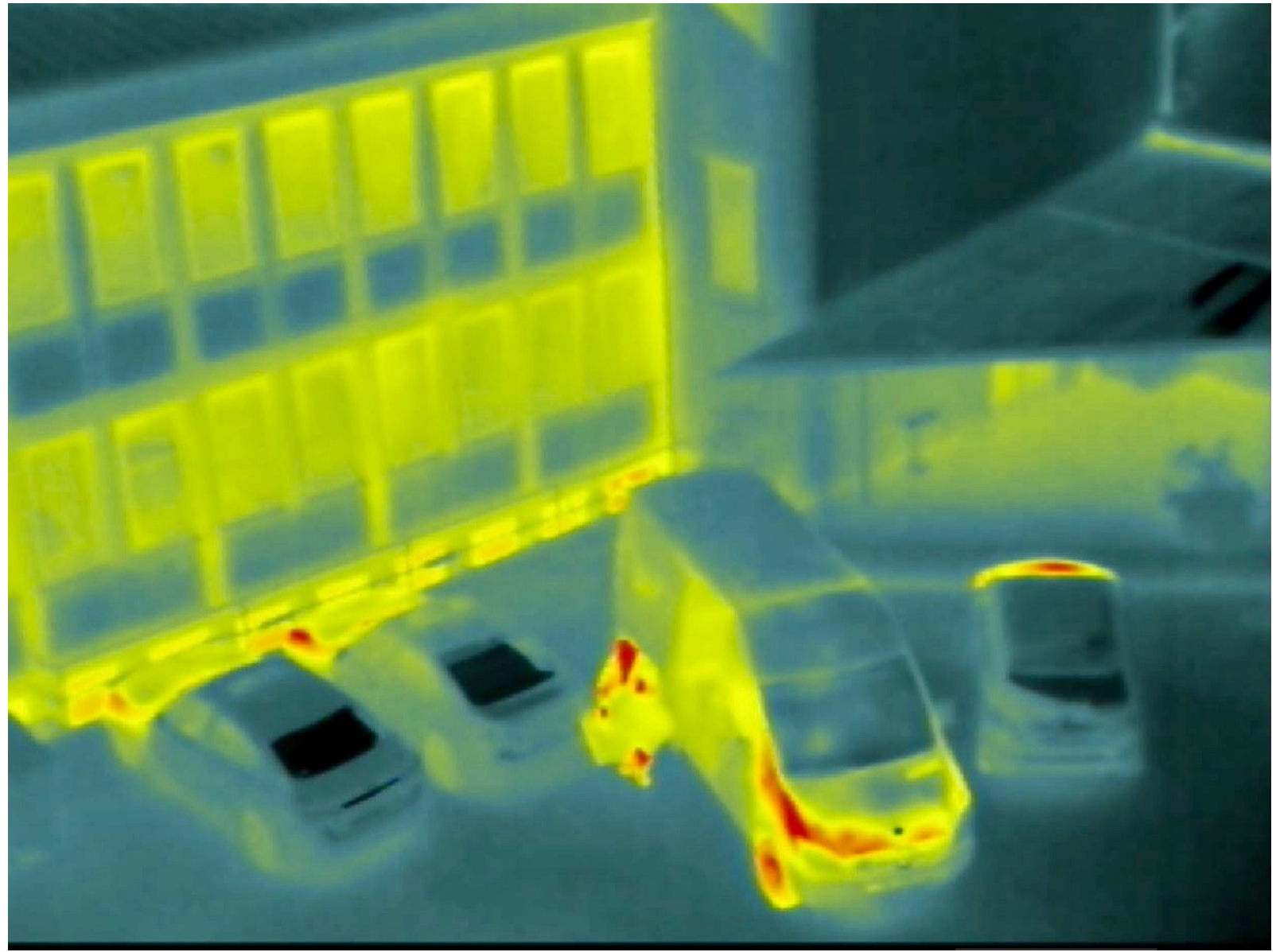
inT800 – 800x600 Sample Image



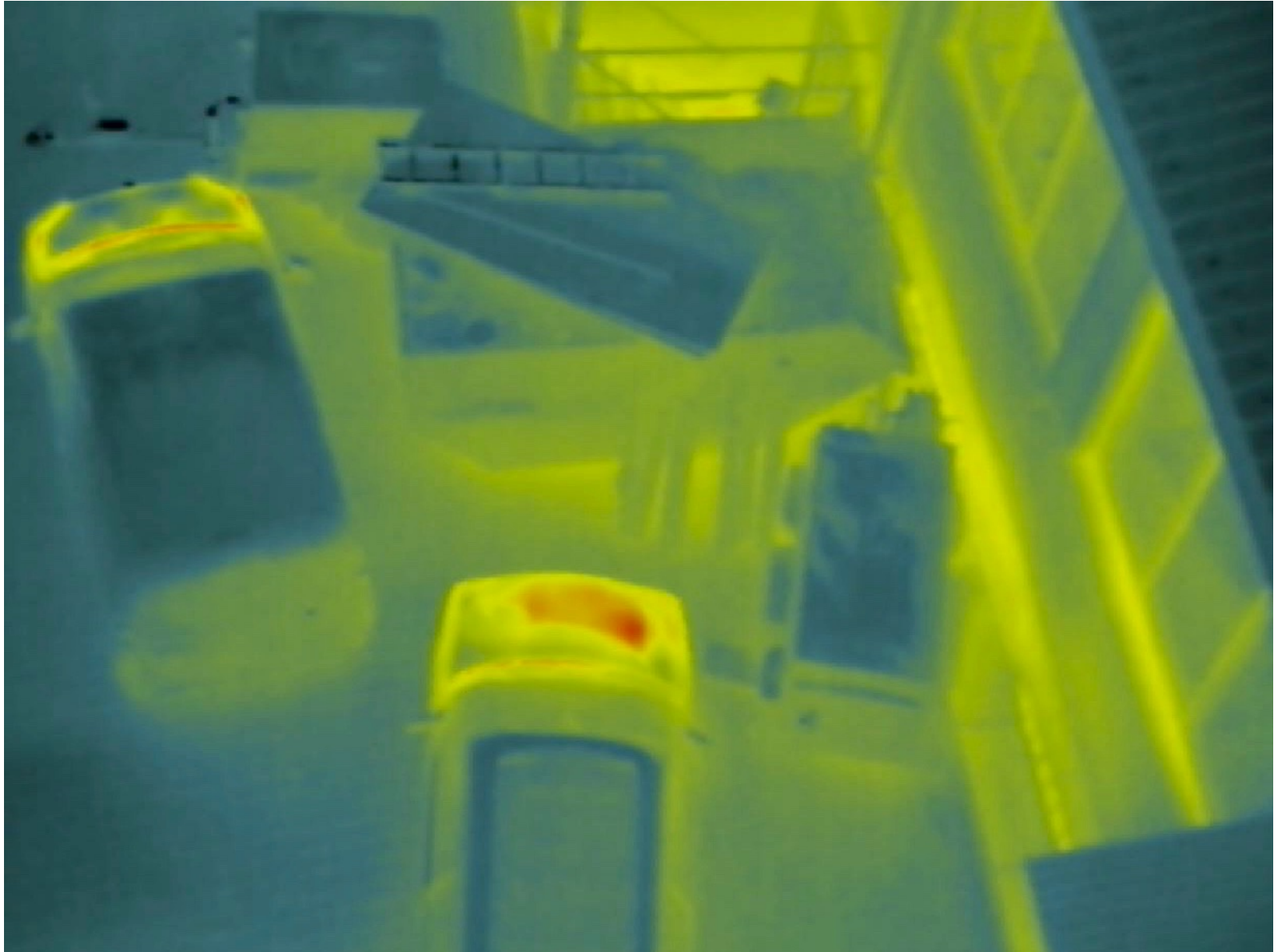
inT800 – 800x600 Sample Image



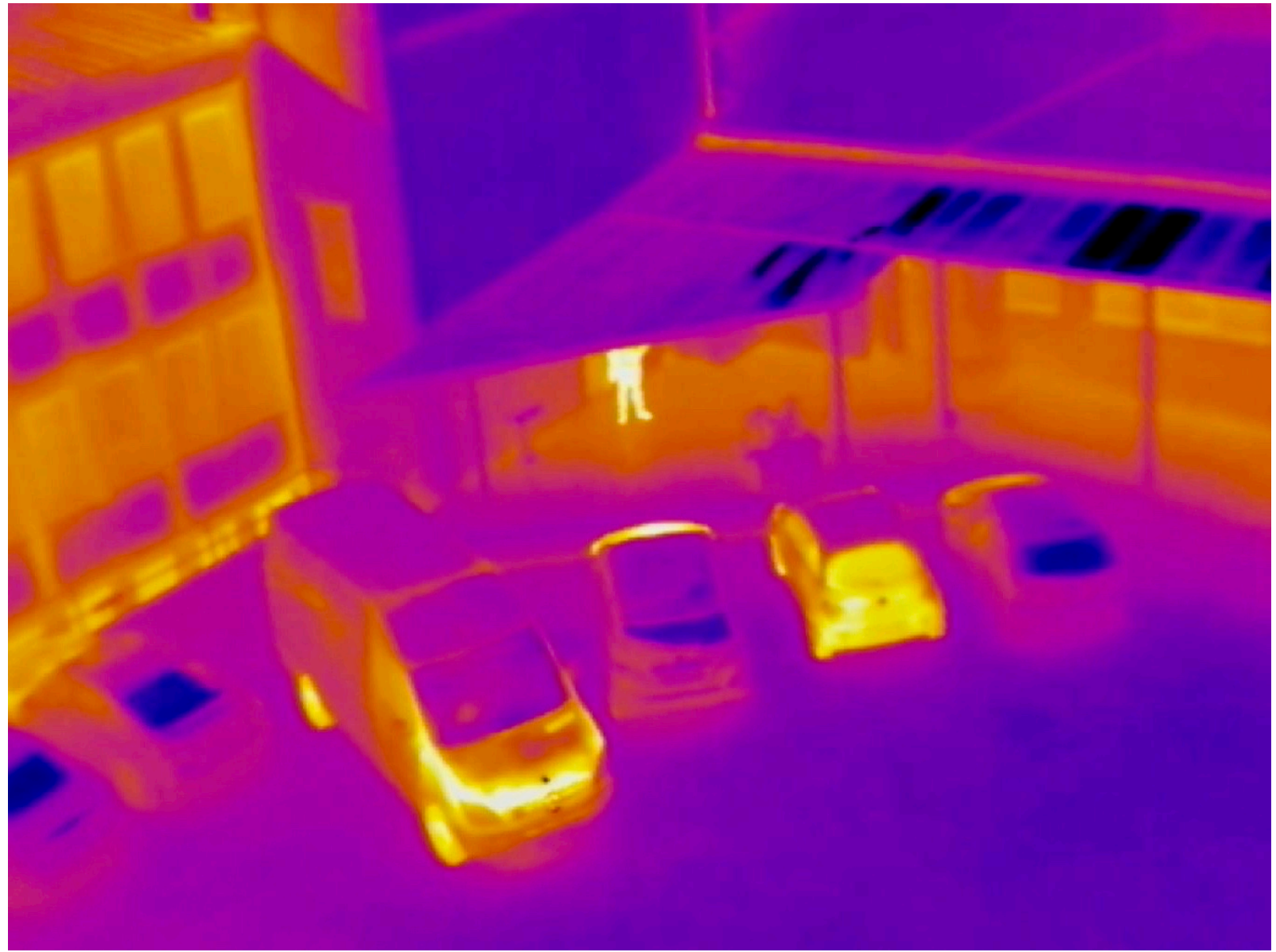
inT800 – 800x600 Sample Image



inT800 – 800x600 Sample Image



inT800 – 800x600 Sample Image





Thank You